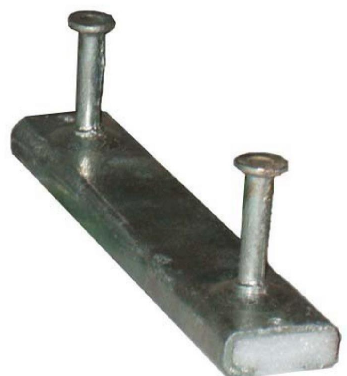


Rail d'ancrage: Type: 28/15

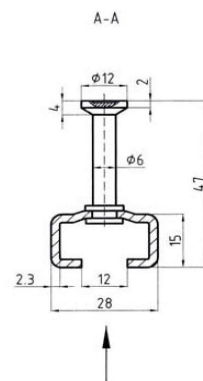
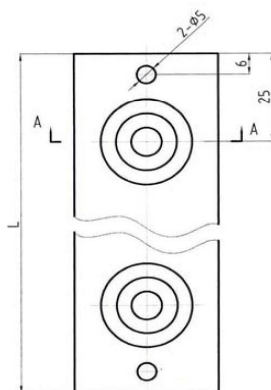
St 37.2 Profil galvanisé à chaud d'épaisseur 0.045 à 0.055 mm



RAIL 28/15 PROFIL C

Ref :	Désignation	Poids
04RAI28/15/15	Rail 28/15 Profil C lg=15cm	0.3
04RAI28/15/20	Rail 28/15 Profil C lg=20cm	0.35
04RAI28/15/25	Rail 28/15 Profil C lg=25cm	0.4
04RAI28/15/30	Rail 28/15 Profil C lg=30cm	0.45
04RAI28/15/300	Rail 28/15 Profil C lg=300cm	4.15

Ref :	Charge admissible daN	Dim mm	Long. mm	Nbr d'ancre	Epaisseur mm
04RAI28/15/15	880	28/15	150	2	2.3
04RAI28/15/20	880	28/15	200	2	2.3
04RAI28/15/25	880	28/15	250	2	2.3
04RAI28/15/30	880	28/15	300	2	2.3
04RAI28/15/300	880	28/15	3000	14	2.3

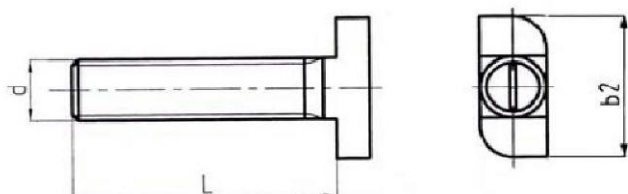


Boulon pour rail 28/15

St 37.2 Zingué blanc d'épaisseur 0.005 mm

BOULON RAIL 28/15

Ref :	Type de profil	d	L	b2	Poids
04BOUR28-M10/30	28/15	M10	30	22.7	0.035
04BOUR28-M10/40	28/15	M10	40	22.7	0.04



Rail d'ancrage: Type: 38/17

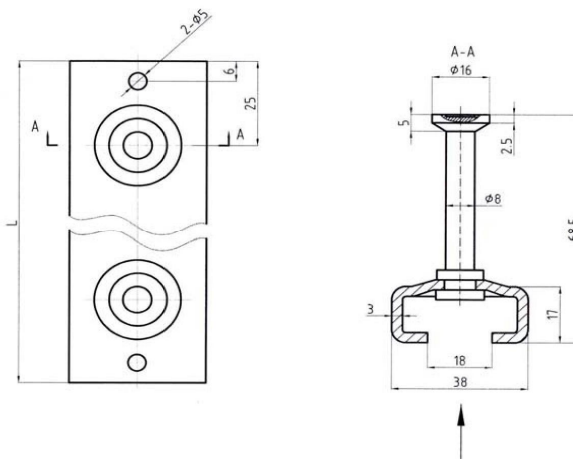
St 37.2 Profil galvanisé à chaud d'épaisseur 0.045 à 0.055 mm

RAIL 38/17 PROFIL C

Ref :	Désignation	Poids
04RAI38/17/15	Rail 38/17 Profil C lg=15cm	0.43
04RAI38/17/20	Rail 38/17 Profil C lg=20cm	0.52
04RAI38/17/25	Rail 38/17 Profil C lg=25cm	0.65
04RAI38/17/30	Rail 38/17 Profil C lg=30cm	0.86
04RAI38/17/35	Rail 38/17 Profil C lg=35cm	0.95
04RAI38/17/300	Rail 38/17 Profil C lg=300cm	6.44



Ref :	Charge admissible daN	Dim mm	Long. mm	Nbr d'ancre	Epaisseur mm
04RAI38/17/15	1750	38/17	150	2	3
04RAI38/17/20	1750	38/17	200	2	3
04RAI38/17/25	1750	38/17	250	2	3
04RAI38/17/30	1750	38/17	300	2	3
04RAI38/17/35	1750	38/17	350	3	3
04RAI38/17/300	1750	38/17	3000	14	3

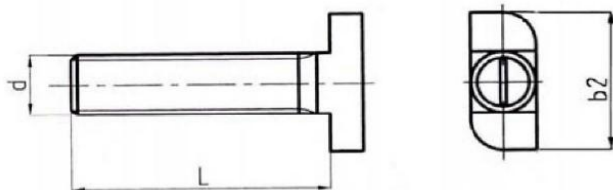


Boulon pour rail 38/17

St 37.2 Zingué blanc d'épaisseur 0.005 mm

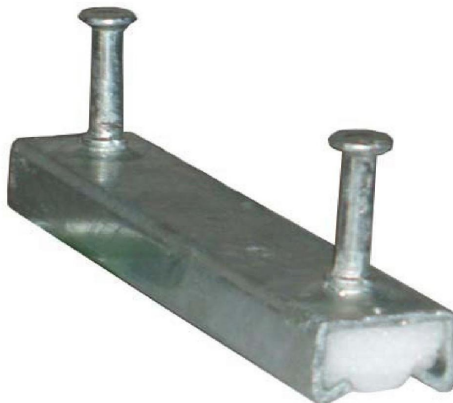
BOULON RAIL 38/17

Ref :	Type de profil	d	L	b2	Poids
04BOUR38-M10/30	38/15	M10	30		0.05
04BOUR38-M12/50	38/15	M12	50	30.5	0.06
04BOUR38-M12/60	38/15	M12	60		0.07
04BOUR38-M16/60	38/15	M16	60		0.08



Rail d'ancrage: Type: 40/25

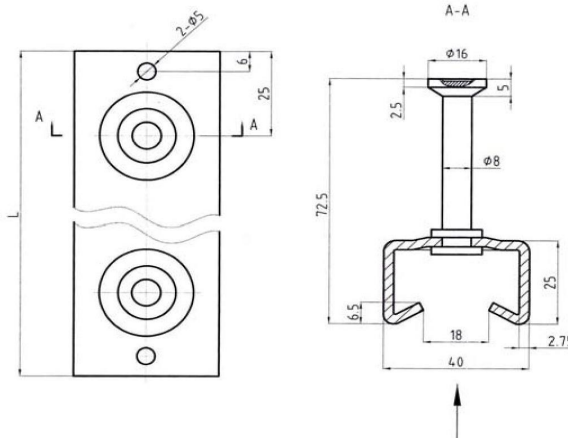
St 37.2 Profil galvanisé à chaud d'épaisseur 0.045 à 0.055 mm



RAIL 40/25 PROFIL C

Ref :	Désignation	Poids
04RAI40/25/15	Rail 40/25 Profil C lg=15cm	0.56
04RAI40/25/20	Rail 40/25 Profil C lg=20cm	0.54
04RAI40/25/25	Rail 40/25 Profil C lg=25cm	0.57
04RAI40/25/30	Rail 40/25 Profil C lg=30cm	1.12
04RAI40/25/35	Rail 40/25 Profil C lg=35cm	1.8
04RAI40/25/300	Rail 40/25 Profil C lg=300cm	6.92

Ref :	Charge admissible daN	Dim mm	Long. mm	Nbr d'ancre	Epaisseur mm
04RAI40/25/15	2000	40/25	150	2	2.75
04RAI40/25/20	2000	40/25	200	2	2.75
04RAI40/25/25	2000	40/25	250	2	2.75
04RAI40/25/30	2000	40/25	300	2	2.75
04RAI40/25/35	2000	40/25	350	3	2.75
04RAI40/25/300	2000	40/25	3000	14	2.75

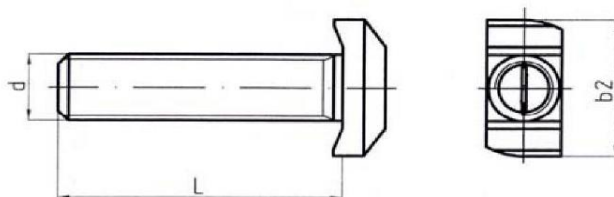


Boulon pour rail 40/25

St 37.2 Zingué blanc d'épaisseur 0.005 mm

BOULON RAIL 40/25

Ref :	Type de profil	d	L	b2	Poids
04BOUR40-M12/50	40/25	M12	50	32.5	0.09
04BOUR40-M12/60	40/25	M12	60		0.095
04BOUR40-M12/80	40/25	M12	80		0.11
04BOUR40-M16/50	40/25	M16	50		0.142
04BOUR40-M16/60	40/25	M16	60		0.17
04BOUR40-M16/80	40/25	M16	80		0.2



Rail d'ancrage: Type: 49/30

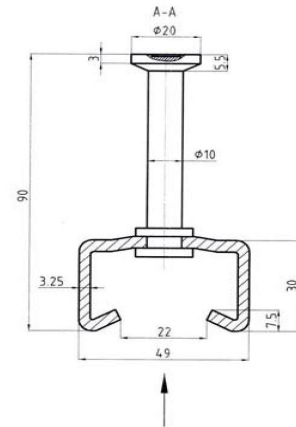
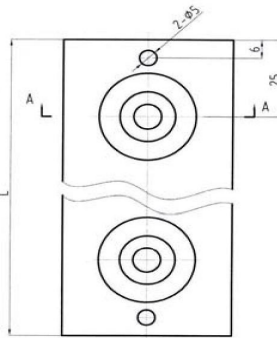
St 37.2 Profil galvanisé à chaud d'épaisseur 0.045 à 0.055 mm

RAIL 49/30 PROFIL C

Ref :	Désignation	Poids
04RAI49/30/15	Rail 49/30 Profil C lg=15cm	0.61
04RAI49/30/20	Rail 49/30 Profil C lg=20cm	0.76
04RAI49/30/25	Rail 49/30 Profil C lg=25cm	0.77
04RAI49/30/30	Rail 49/30 Profil C lg=30cm	1.05
04RAI49/30/300	Rail 49/30 Profil C lg=300cm	19.74



Ref :	Charge admissible daN	Dim mm	Long. mm	Nbr d'ancre	Epaisseur mm
04RAI49/30/15	3000	49/30	150	2	3.25
04RAI49/30/20	3000	49/30	200	2	3.25
04RAI49/30/25	3000	49/30	250	2	3.25
04RAI49/30/30	3000	49/30	300	2	3.25
04RAI49/30/300	3000	49/30	3000	14	3.25

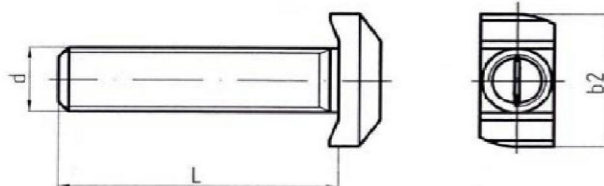


Boulon pour rail 49/30

St 37.2 Zingué blanc d'épaisseur 0.005 mm

BOULON RAIL 49/30

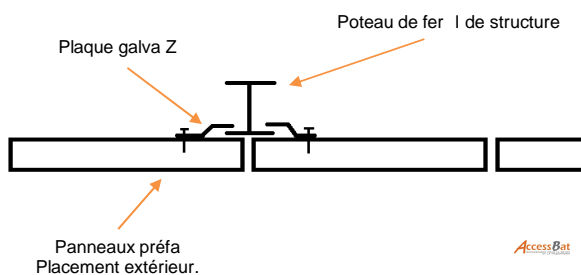
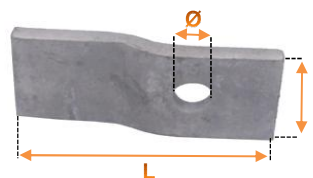
Ref :	Type de profil	d	L	b2	Poids
04BOUR49-M16/50	49/30	M16	50		0.16
04BOUR49-M16/60	49/30	M16	60		0.17
04BOUR49-M16/80	49/30	M16	80	41	0.2
04BOUR49-M20/80	49/30	M20	80		0.31
04BOUR49-M20000	49/30	M20	100		0.36



Plaque Galva en Z avec trou de Ø 13mm.

PLAQUE GALVA Z

Ref :	L x l (mm)	ep (mm)	Z mm	Poids u	Cond.
04PLAZ08-40X80	80x40	8	8	0.24	1
04PLAZ12-40X80	95x40	8	12	0.24	1
04PLAZ16-40X80	95x40	8	16	0.24	1
04PLAZ20-40X80	95x40	8	20	0.24	1



AccessBat

Equerre

EQUERRE

Ref :	Dimension	ep. mm	Ø mm	Poids u	Cond.
04EQU120X120EP8	120x120x80	8	14	1.02	1
04EQU120X120X80	120x120x80	12	14	1.57	1
04EQU8X8X8D16G	80x80x80	8	16	1.02	1

Inox / Galva

Réalisation de tout type d'équerre, brut ou galva.

